

Rhino Log Homes {A subsidiary
of Alexir Group (Pty) Ltd}

company profile

Rhino Log Homes is another
offshoot of Alexir Group that
handles all timber construction
works done by Alexir Group



RHINO LOG HOMES

our intro.

01



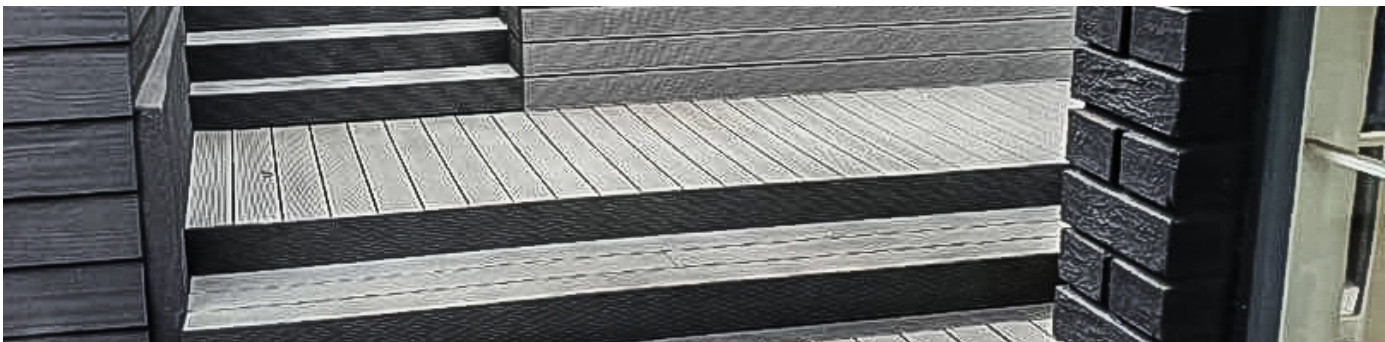
Rhino Log Homes is another offshoot of Alexir Group (incorporated in the year 2014). Rhino Log Homes was formed to specifically handle all timber construction works done by Alexir Group. The strong financial backing and full range of products that Alexir Group provides, affords Rhino Log Homes the ability to create extraordinary homes for our clients that combine creative design, high quality wood structures, energy efficient insulation materials and

flexible construction solutions.

Rhino Log Homes was recently established in 2020, but the parent company (Alexir Group) has been building log homes in Botswana for the past 10 years and has grown to become the premier custom log and timber home manufacturer in Botswana. Alexir Group is also a major shareholder in Linkfecta (Pty) Ltd, a company that specialises in Light Steel Frame housing in Botswana.

The company also has a presence in the South African market where it operates as Pine Log Homes. Alexir Group also has a strategic partnership with Light Steel Homes and work together to deliver light steel homes for the South.

Mr Alex Thatayaone Ndovie is the founding director of the Alexir Group (Pty) Ltd.





02

social responsibility

Building Log Homes in Support of Rhino Conservation Efforts In Botswana.

Introducing Rhino Log Homes, our new entity and a subsidiary of Alexir Group(Pty) Ltd. This is in support of Rhino Conservation efforts in Botswana. Our social

responsibility is in our new name. As a result of the growing concern for the species and in a bid to raise awareness of the crisis we have taken a step to help in any way we can by making our construction site works translate to efforts made in protection of our rhinos. We will make cash

contributions and in kind (from each project we do) towards Rhino Conservation in Botswana. By doing business with us you will automatically become part of this important initiative for our country and tourism industry.

why us?

03

mission statement

As the nations premier outfitter of custom log homes & timber frame cabins. We passionately strive to provide the highest quality products along with superior service to our log home/ timber frame house enthusiast customers every single day.

core values

Honesty and Integrity · Superior Customer Service · Quality Products and Services · Respect for Individuals. Excellence in Performance

stewardship

Respect for the environment is nothing new at Alexir Group. For all the years in operation, it's been part of who we are. Good forestry practices by our timber suppliers began simply because it was the right thing to do. Now it's a matter of promoting sustainability.

Alexir Group is committed to providing long lasting, energy efficient, environmentally responsible building products to all our customers.

04



our design

A well-designed log home should offer immediate visual satisfaction and a feeling of natural warmth and comfort. Owner Alex Ndovie's longtime practice as a log home designer makes him an ideal resource for clients who have a unique vision they hope to make a reality. Alex is deeply involved in the design phase of each project, and invites owners to play an active role in designing their home; this way, he creates custom log shells that are reflective of their needs and dreams. Communication is vital and collaboration is welcomed.

With the added expertise of Alexir Group's architectural and design team, Alex and his clients create one-of-a-kind homes that are sustainable, energy efficient, and compatible with the building site's unique climate and weather issues.

quality of service

Due to our experience, we are able to combine design services with handcrafted log shell construction and general contracting according to each client's needs. Just as a log home, timber frame house and decks are tied to their environment, so are all the aspects of creating a theme interconnected. A structure maintains its integrity if every feature is afforded the same attention to detail and devotion to craftsmanship. That's why we can oversee it all, from drawing up the plans to completing the finish work. Hard work and attention to detail ensure that every project is on time and on budget. Our commitment to perfection in every step of the homebuilding process means our clients realize the dream of building a custom log home with complete confidence.



general contracting

In addition to designing and constructing custom log shells, Alexir Group often serve as General Contractors who will stay with a project to various stages of completion, or oversee the entire homebuilding process from start to finish. As a registered contractor, founder and owner Alex is often present from the initial excavation

until the day the owners move in. Having been in the industry for over a decade, Alex has fostered great business relationships with the cream of the crop among subcontractors, and knows exactly who among them can work with an integrity that matches his own. Alex subcontracts to the masters of their trades, all of whom play significant roles making

a log home complete, efficient, and optimally livable while retaining its organic character.

When it comes to fine finish work, Alexir Group can apply the same artisanship we do while constructing the log shell. We are known for our top quality finishes and masterful woodworking.

06

sustainability **matters**



Did you know?

01

Trees are a renewable resource, which is the first step in sustainability. When coupled with a log home and log cabin manufacturer that is concerned with environmental stewardship, the result is an eco-friendly custom log home or log cabin.

02

The amount of power used to mill the trees into logs is far less than what is used to cut trees into dimensional lumber for standard 'stick built' homes.

03

Log homes and log cabins offer advantages in the form of thermal mass, which makes a log home easier and more cost effective to warm during the cold months and more affordable to cool during the summer



07

A-frame cabins



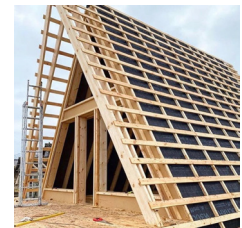
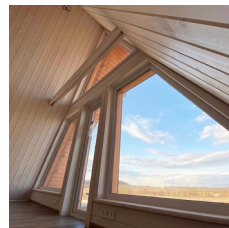
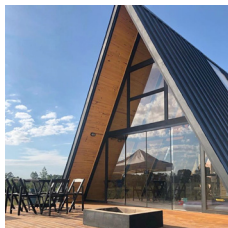
Our A-frame house plans feature a steeply pitched roof and angled sides that appear like the shape of the letter "A." The roof usually begins at or near the foundation line and meets up at the top for a very unique, distinct style. This home design became popular because of its snow-shedding capability, and its cozy cabin feel. A typical style for contemporary vacation homes, A-frame plans are more popular in spots with a lake-front view and are oftentimes spotted near the ocean or

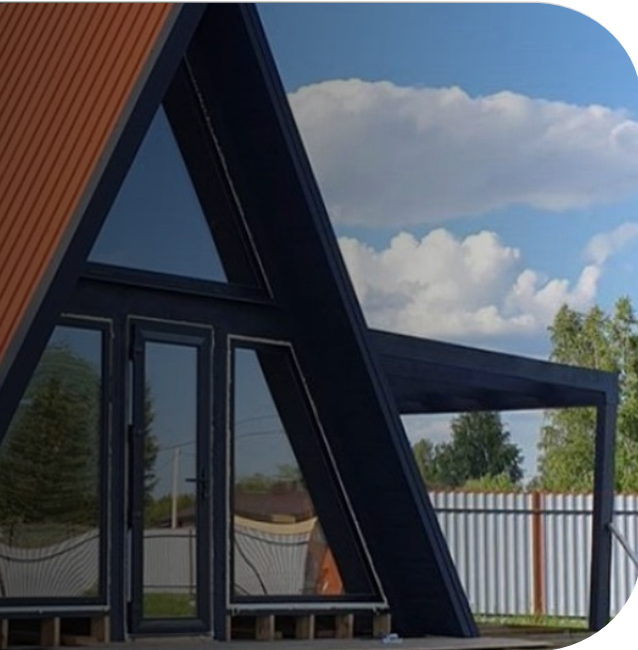
tucked away in mountainous regions.

The typical home often consists of high ceilings, comfortable bedrooms, and lots of storage space. These homes are easy to construct because of the simple structure, and they have more durability than other houses as they can withstand any sort of harsh weather.

Due to the simplicity of A-Frame house designs – and the oversized windows typically used – more

light and air is allowed inside the house. The outdoor space typically consists of large decks that may wrap around the house, which extends the living space of the floor plan. This space can be used for anything from entertaining to relaxation. This architectural style is perfect for creating a special retreat in the vacation spot of your dreams. Even though the structure is typically simple, that doesn't mean these homes can't be extravagant.





services

Log Homes



From cosy log cabins/homes to luxury bush lodges, we are proud to bring world-class timber construction, driven by passion and expertise, to each and every one of its projects. We specialize in solid log houses and profiled log construction (timber frame houses)

We build with timber frame, post and beam, as well as single and double tongue-and-groove (TNG) heavy solid log and offer cladding including smooth fibre cement siding, Vermont plank as well as log profile cladding (timber frame) for a 'log home' look.

Interior finishes include smooth fibre cement board, fire-stop gypsum board or timber cladding. These can all be customised to suit your particular taste in colour and texture. Roofing options include ibr sheets, dura tiles, thatch or Chromadek roof sheeting

services

Timber frame house construction



services

Chalets



Alexir Group also specialise in the supply and on-site assembly of tented camps and resorts. Our projects are

customized to every client's needs and our creative team is able to create unique tented luxury chalets that bring

some level of elegance in a given environment, be it in the wilderness or planned area.

services

Composite / Synthetic decks



At Alexir Group, we supply premium composite wood products from decking to cladding, balustrading and pergolas.

All of our products offer high durability, reliability and affordability as well as a 10, 15 and 25 year factory guarantees.

Alexir Group are experts in composite products and the installation thereof,

our work





RHINO LOG HOMES

Cell: +267 72565684

Email: sales@rhinologhomes.co.bw

Website: www.rhinologhomes.co.bw